



reindeer
DESIGN
PO Box 176 Alton, NH 03809

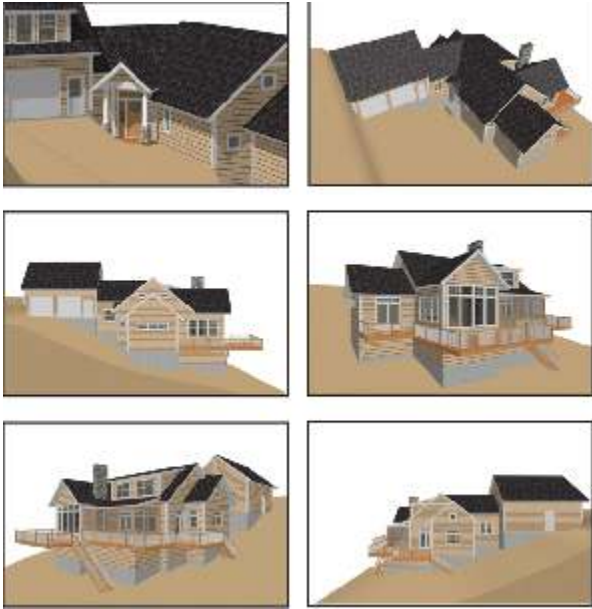

reindeer
DESIGN

www.reindeer-design.com



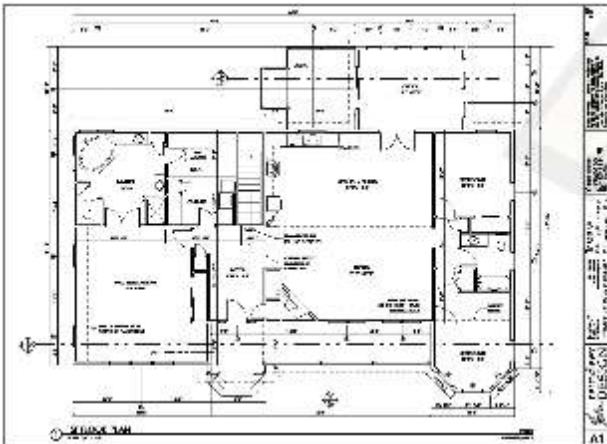
CONCEPTUAL DESIGN

Every design starts with the creation of a 3D computer model. The interaction of adjacent spaces, the connection with outdoor living areas, and floor to floor relationships are clearly shown via a virtual tour and photo-realistic images. Real-time revisions can be made as the model is presented and reviewed.



CAD DRAWINGS

Structural engineering, building code, architectural design standards, and common construction techniques guide the translation of the concept to working drawings. These oversized documents provide the information concerning construction and materials needed by contractors, building officials, lenders, and suppliers.



OUR COMPANY

Reindeer Design, LLC is an architectural design company located in the beautiful lakes region of New Hampshire. We specialize in residential designs, providing plans for projects ranging from custom waterfront to budget-conscious starter homes. Our plans go beyond cookie-cutter to create a home that is site specific, builder specific, and owner specific.

BUILDER BENEFITS

- Drawn the way you build - You specify your preferred construction methods and materials.
- Offer professional design services - Maintain contact with your customers by partnering with us, and stay in the design loop while doing what you do best - building.
- Building efficiency - Our structures are designed and engineered concurrently, taking advantage of material sizes and incorporating standard parts and systems, while reducing cutting, calculating, and construction waste.
- Fast revisions - Using in-house plotting and computer generated plans we can revise and print quickly.
- One-stop shopping - Custom architectural design for owners and "spec" house designs at builder's pricing.

HOME DESIGNER

Craig Claus has over 15 years of experience in computer-aided design (CAD) and 3D virtual modeling. Mr. Claus has degrees in Mechanical and Architectural Engineering. His artistic talents, engineering education, and hands-on experience as a carpenter and landscaper make his designs both accurate and attractive to homeowners and builders.



P.O. Box 176
Alton, NH 03809
603.875.4744
fax 603.875.4746

Customers express their gratitude

"We also add our sincere thanks. Your help and cooperation is greatly appreciated. We'd gladly recommend your services to one and all."

"We have spent a great deal of time with these plans, and would like to thank you for a great job!"

"Thanks for your time last night. It was very helpful to 'see' what the cabin looks like in 3D... makes the 'feel' of it all more real. I know that we will make better decisions and trade offs with that perspective. Looking forward to seeing the elevations and floor plans. Thanks again."

"It looks great. Thanks."

"Thank you for addressing the changes as quickly as you have. Kristine and I appreciate the professional and personal attention you have afforded us... Looking forward to continued work with you. Thank you."

"I spoke with Steve. We love everything"

"Very Cool!"

WHAT'S ON YOUR WISHLIST?
www.reindeer-design.com

